

KOMBANK ARENA CAMERAS

LEVEL 300

- SKYBOXES 329,331-347; 366-370 - KOMBANK ARENA SPECTATORS
- SKYBOXES 314,315,319-328,330- LOC SPECTATOR
- SKYBOXES 316; 356 - POLICE
- SKYBOX 317-318, 362-365 - LOC VIP
- SKYBOX 348 - KOMBANK ARENA STORAGE
- SKYBOXES 349-350 - LOC STORAGES
- SKYBOXES - EICH 2017
- SKYBOXES 301 - Event Presentation Room
- SKYBOXES 302 - Technical Delegates
- SKYBOX 303 - Competition Office
- SKYBOX 304; 305 - HB Office
- SKYBOX 306 - Photo Finish
- SKYBOX 307 - VDM
- SKYBOX 308 - Timing/Dataprocessing - OVR (ATOS)
- SKYBOX 309 - IT Room
- SKYBOX 310 - Telecom Control / Supervision Room
- SKYBOX 311 - Communication Room-Motorola
- SKYBOX 312 - SPAR Office
- SKYBOX 312,313 - LOC Office
- SKYBOX 351 - ITOs
- SKYBOX 352 - Jury of Appeal
- SKYBOX 353 - Video Recording
- SKYBOX 354 - EDM
- SKYBOX 355 - VVIP
- SKYBOX 357 - HB Studio
- SKYBOX 358-360 - BBC
- SKYBOX 361 - European Athletics President Office

NUMBER	LEGEND-RACES CAMERAS	HD1
1	HARD	21X
2	HARD	75X
3	HARD	50-70X
4	CRANE	21X
5	HARD	40X
6	HARD	86X
7	HARD	40X
8	STEADY	4.7
9	STEADY	4.7
10	HANDHELD	21X
11	MINICAM	WIDE
12	HARD	> 86X
13	HARD	21X
14	MINICAM BEAUTY	WIDE
15	HARD BEAUTY	4.7

NUMBER	LEGEND-LONG, TRIPLE JUMP CAMERAS	VIEW	HD2
1	HARD/HANDHELD	ATHLETE PRESENTATION	21X
2	HARD	FRONTAL SHOT-SSLM	> 86X
3	HARD	MASTER SHOT	40X
4	HANDHELD/MINI	JUMP	4.7
5	HANDHELD	BENCH, AFTER LANDING, COACH	21X
6	MINICAM	TAKE OF BOARD	WIDE

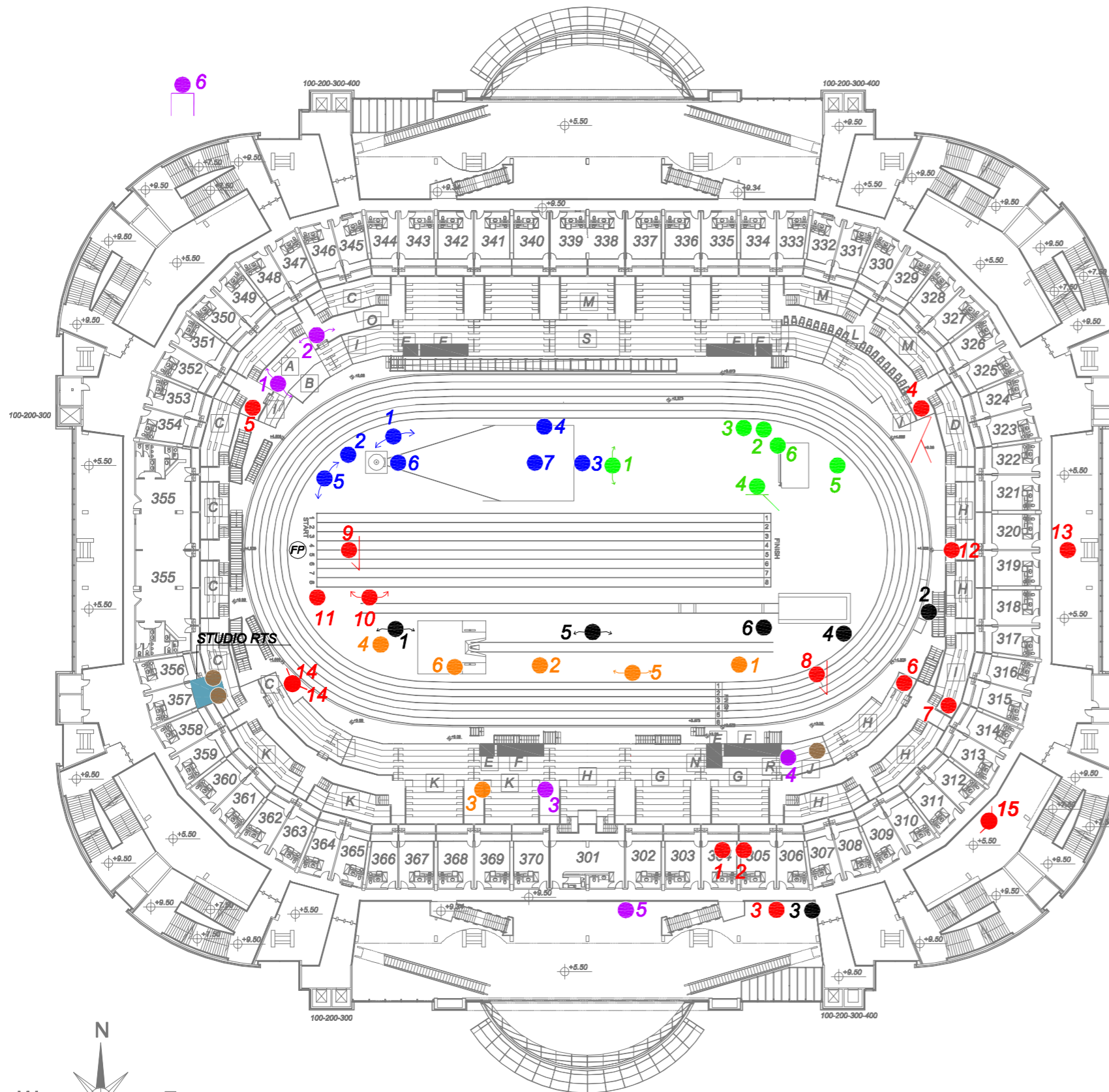
NUMBER	LEGEND-SHOT PUT CAMERAS	VIEW	HD3
1	HARD/HAND	ATHLETE PRESENTATION AND COACH	14X
2	HARD	ENTRY AND POST THROW	14X
3	HARD	FRONTAL CLOSE UP	75X
4	TOWER CAM	MASTER SHOT	21X
5	HANDHELD	BENCH/LEADERS	14X
6	MINICAM	FRONTAL SHOT LOW	WIDE
7	HOTCAM	HIGH OVER HEAD-CAT WALK TRACK	21X

NUMBER	LEGEND-HIGH JUMP CAMERAS	VIEW	HD4
1	HANDHELD	BENCH, LEADER, COACHES	21X
2	HARD	MASTER SHOT # 1	21X
3	HARD	CLOSE UP	> 40X
4	POLECAM	2nd MASTER SHOT IN MOTION	WIDE
5	HARD	FRONTAL SHOT -SSLM	>86X
6	MINICAM	BAR CLEARANCE	WIDE

NUMBER	LEGEND-POLE VAULT CAMERAS	VIEW	HD5
1	HARD	ATHLETE PRESENTATION + SSLM	> 86X
2	HARD	MASTER SHOT	21X
3	HARD	JUMP PERFORMANCE	75X
4	HARD	FRONT SHOT	40X
5	HANDHELD	BENCH, LEADER, COACH	21X
6	MINICAM	BAR CLEARANCE	WIDE

NUMBER	LEGEND - MASTER DIRECTING ROOM	VIEW	HD6
1	HANDHELD	MEDALS CEREMONY	WIDE 4.7
2	HANDHELD	MEDALS CEREMONY CLOSE UP	17X
3	HARD	MEDALS CEREMONY AREA	55-75X
4	HARD / HANDHELD	FLASH INTERVIEW AREA	17X
5	HARD	INTERMEDIATE (TOTAL OF EVENT POINTS)	40-55X
6	MINICAM / HARD	BEAUTY SHOTS INT/EXT	WIDE

LETTER	LEGEND
A	Award Podium
B	Photographers Podium
C	LOC Tribune
D	Volunteers
E	Secretaries
F	Coaching Zones
G	Commentary Positions
H	Media Tribune
I	Photographers Tribune
J	Live TV and Radio Mixed Zone
K	VIP Tribune
L	Disabled Persons
M	Spectators on level 200
N	Finish Line Judges
O	Flag Area
R	Flash Quotes
S	Serbian Athletic Association



FP FINALISTS PRESENTATION CAMERA

BELGRADE 2017

**EUROPEAN ATHLETICS
INDOOR
CHAMPIONSHIPS**